



ADN32x30-S



ADN40x30-S



ADN50x30-S

Features

1. ADN series compact cylinder accord with ISO21287 standard.
2. ADN series cylinder with compact structure, derived lots of variety types, and wide range of applications.
3. Both end use rubber gasket to absorb the remaining energy of the high speed movement and the machine cycle.
4. Every ammseby way has large number of accessories, so it is very sample.

Ordering Code

ADN	25	30	10	S	B	LB	MT
Series	Bore	Stroke	Adjustable Stroke	Magnet	Thread Type	Mountings	Sensor
ADN: Double acting	20 25 32 40	5-200mm	10: 10mm 20: 20mm 30: 30mm 50: 50mm 75: 75mm 100: 100mm	S: With magnet Blank: Without magnet	Blank: Female thread B: Male thread	Blank: Basic mountings LB: Front and back mounting FA: Front mounting flange FB: Back mounting flange CA: Back clevis (Single earring) CB: Back hinge (Double earring) YB: Back hinge	D-Z73 * Standard wire is 1 meter, please order for other length
ADND: Double-shaft type	50 63 80 100						
ADNJ: Double-shaft with adjustable stroke							

Specification

Bore (mm)	20	25	32	40	50	63	80	100
Operation	Double Acting							
Working Medium	Air							
Operating Pressure Range	0.1 ~ 1.0MPa							
Proof Pressure	1.5MPa							
Operating Temperature Range	-20 ~ 70°C							
Operating Speed Range	30 ~ 500mm/s							
Port Size	M5x0.8			G1/8"				

ADN Series

New Compact Cylinder (Conforms to ISO21287 Standard)

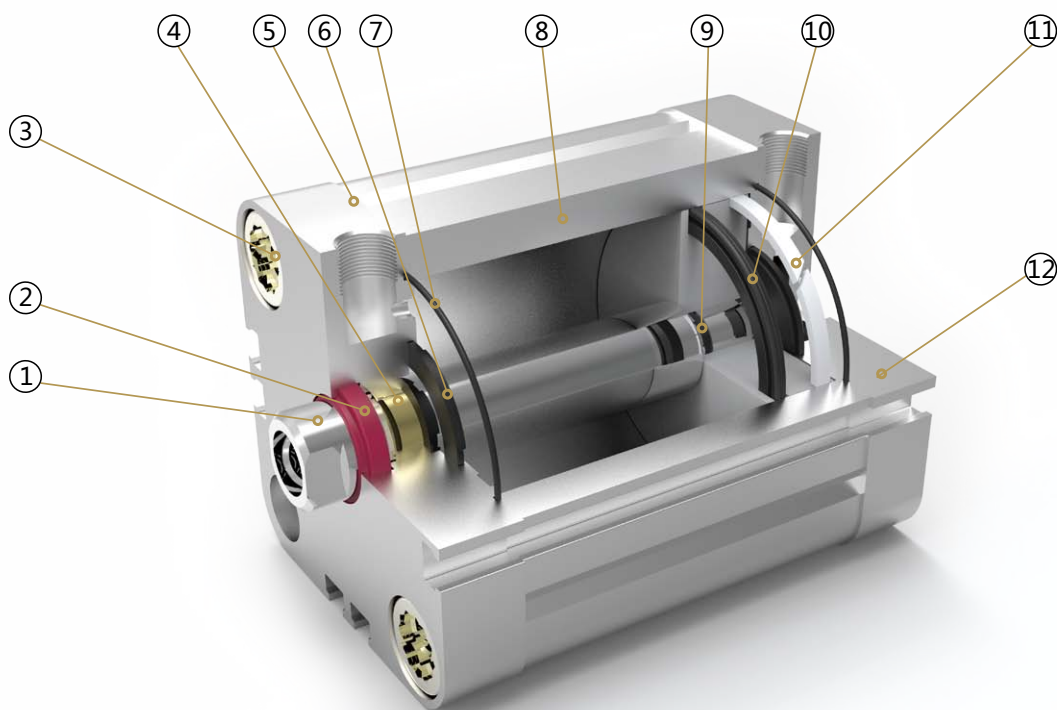


JELPC[®]

JELPC
— China Pneumatic

Cylinder
Sizing
SI
SI A.
SIB
SQ
DNT
SC / SU
SCT
SC A.
SL
DN
DSN
DN/DSN A.
MA
MAC
MA/MAC A.
MAL
MALC
MAL/MALC A.
SDA
CQ2
TCQ2
ADN
TADN
PPRM
CJ2
CDU
TN
CXS
MGP
MSQ

Internal Structure



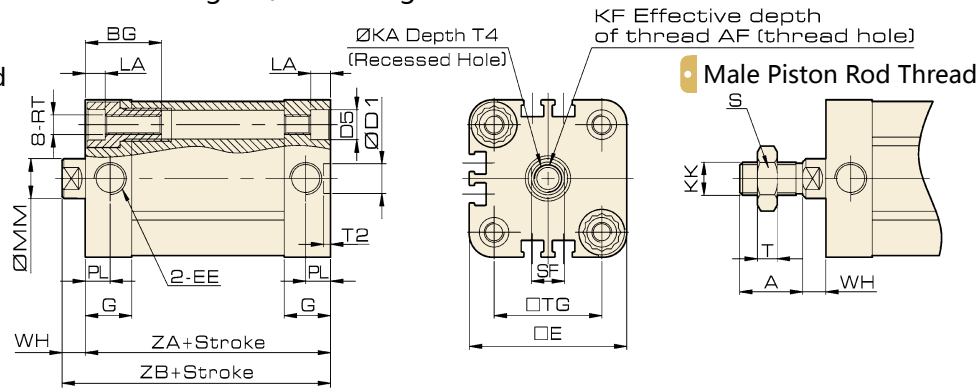
Parts

Number	Name	Number	Name
1	Piston rod	7	O ring
2	Shaft seal	8	Barrel
3	Cover screw	9	O ring
4	DU bearing	10	Piston seal
5	Front cover	11	Anti-friction seal
6	Anti-collision gasket	12	Back cover

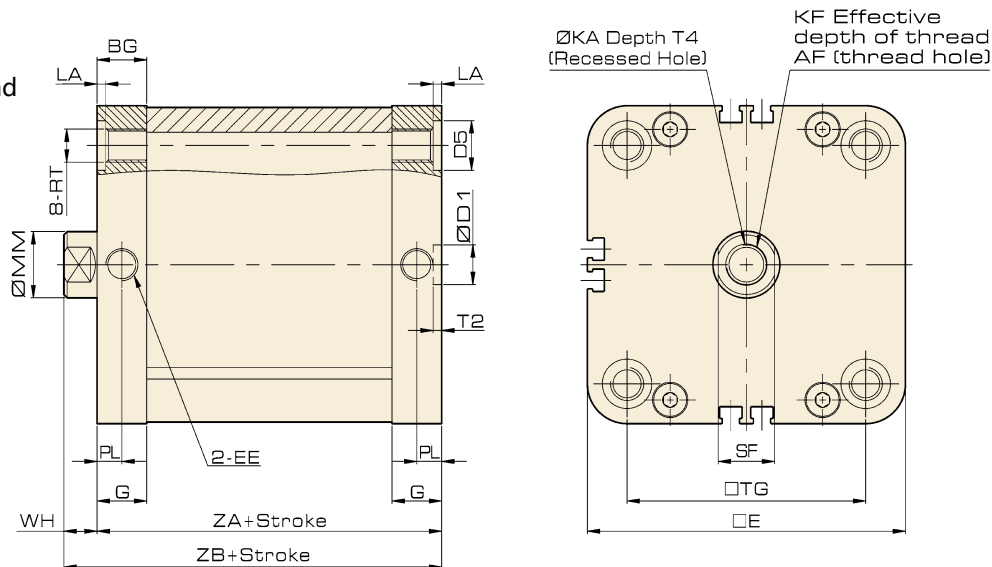
Overall Dimension

ADN Ø20~Ø100 Without magnet / With magnet

Standard female thread Ø20~Ø63



Standard female thread Ø80~Ø100



Cylinder

Sizing

SI

SI A.

SIB

SQ

DNT

SC / SU

SCT

SC A.

SL

DN

DSN

DN/DSN A.

MA

MAC

MA/MAC A.

MAL

MALC

MAL/MALC A.

SDA

CQ2

TCQ2

ADN

TADN

PPRM

CJ2

CDU

TN

CXS

MGP

MSQ

Dimension

Bore/Symbol	Stroke Range (mm)	A	AF	BG Min.	D1	D5	E	EE	G	KA	KF	KK	LA
20	5~200	16	14	15	9	9	36	M5	10.5	6.5	M6×1	M8×1.25	5
25							40		11				
32		19	16	16			47.5	G1/8	14	8.5	M8×1.25	M10×1.25	
40							55						
50		22	20		12	66	10.5			M10×1.5	M12×1.25		
63						78.3							
80		28		17		-	96			15	12.5	M12×1.75	
100							116	21	-				

Bore/Symbol	MM	PL	RT	S	SF	T	T2	T4	TG	WH	ZA	ZB
20	10	5	M5×0.8	12	9	5	2.1	2.6	22	6	37	43
25									26		39	45
32	12	7.5	M6×1	17	10	6		3.3	32.5	7	44	51
40									38		45	52
50	16		M8×1.25		13	7	2.6	4.7	46.5	8	49	57
63									56.5		54	64
80	20		M10×1.5	23	17	8		6.1	72	10	67	77
100									89			

ADN Series

New Compact Cylinder
(Conforms to ISO21287 Standard)



JELPC[®]

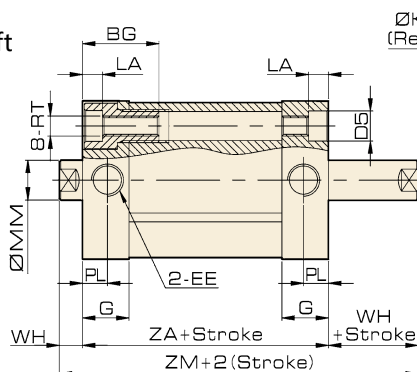
JELPC

— China Pneumatic

Overall Dimension

ADND Ø20~Ø100 Without magnet / With magnet

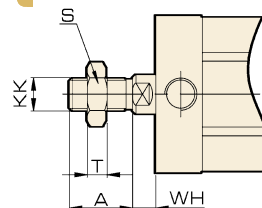
Double shaft with female thread Ø20~Ø63



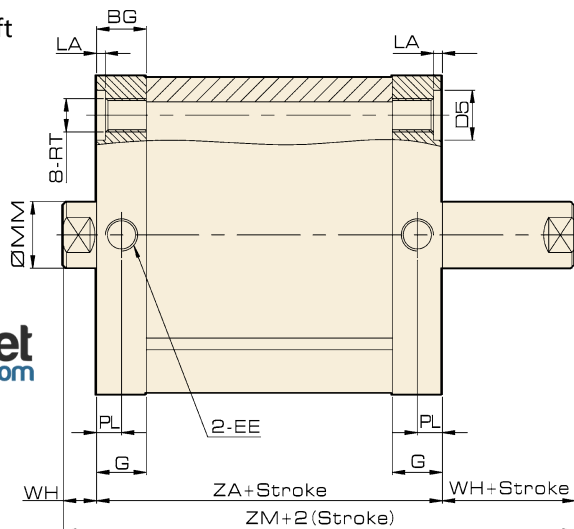
ØKA Depth T4
(Recessed Hole)

KF Effective depth
of thread AF (thread hole)

Male Piston Rod Thread

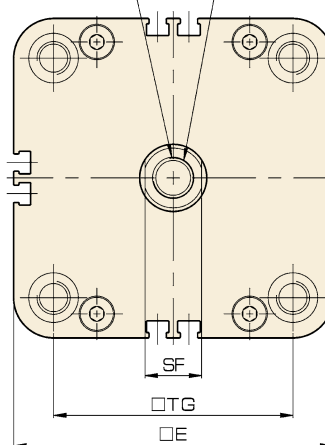


Double shaft with female thread Ø80~Ø100



ØKA Depth T4
(Recessed Hole)

KF Effective depth
of thread AF (thread hole)



hidroticaret.com
uzman satış, doğru fiyat, hızlı teslimat

Dimension

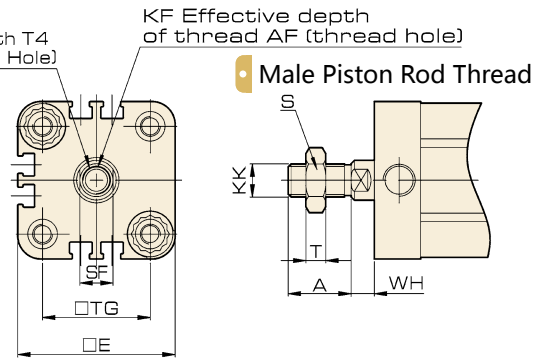
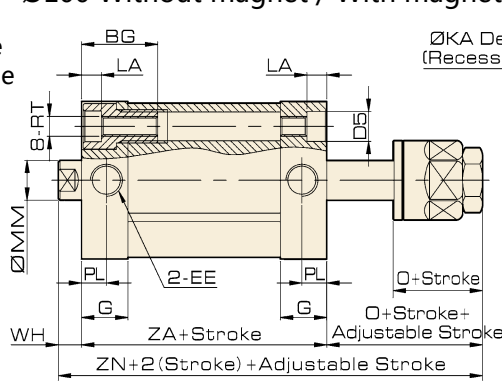
Bore/Symbol	Stroke Range (mm)	A	AF	BG Min.	D5	E	EE	G	KA	KF	KK	LA
20	5~200	16	14	15	9	36	M5	10.5	6.5	M6×1	M8×1.25	5
25						40		11				
32		19	16	16		47.5	G1/8	14	8.5	M8×1.25	M10×1.25	
40						55						
50		22	20	12	66	10.5			M10×1.5	M12×1.25		
63					78.3							
80		28	17	-	96	15	12.5	M12×1.75	M16×1.5	-		
100					116	21						

Bore/Symbol	MM	PL	RT	S	SF	T	T4	TG	WH	ZA	ZM
20	10	5	M5×0.8	12	9	5	2.6	22	6	37	43
25								26		39	45
32	12		M6×1	17	10	6	3.3	32.5	7	44	58
40								38		45	59
50	16	7.5	M8×1.25		13	7	4.7	46.5	8	49	61
63								56.5		54	65
80	20		M10×1.5	23	17	8	6.1	72	10	54	74
100								89		67	87

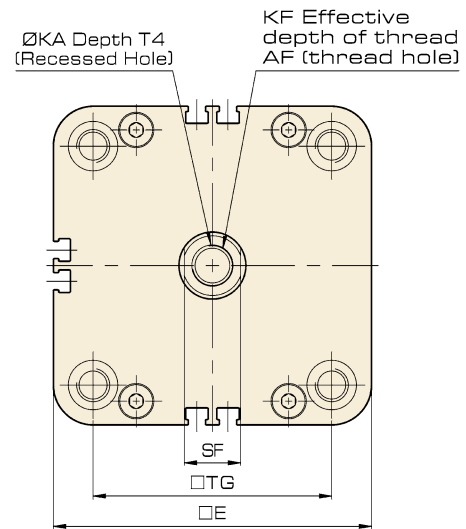
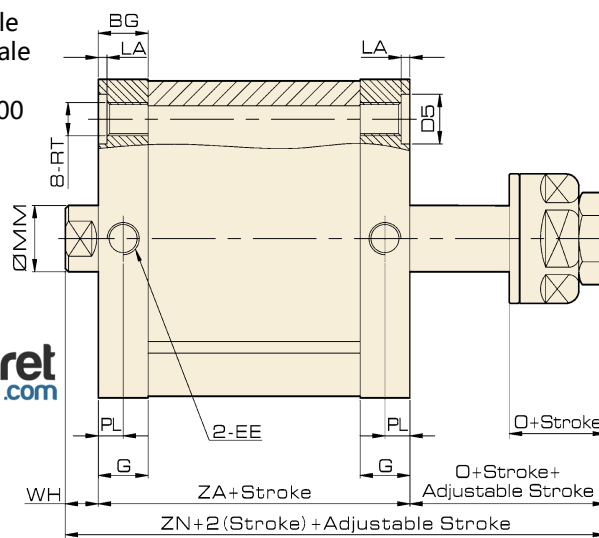
Overall Dimension

ADNJ Ø20~Ø100 Without magnet / With magnet

- Adjustable with female thread Ø20~Ø63



- Adjustable with female thread Ø80~Ø100



Dimension

Bore/Symbol	Stroke Range (mm)	A	AF	BG Min.	D5	E	EE	G	KA	KF	KK	LA
20	5~200	16	14	15	9	36	M5	10.5	6.5	M6×1	M8×1.25	5
25						40		11				
32		19	16	16		47.5	G1/8	14	8.5	M8×1.25	M10×1.25	
40						55						
50		22	20	12	66	10.5			M10×1.5	M12×1.25		
63					78.3							
80					28	17		-	96	15	12.5	
100		116	21									

Bore/Symbol	MM	O	PL	RT	S	SF	T	T4	TG	WH	ZA	ZN
20	10	19	5	M5×0.8	12	9	5	2.6	22	6	37	62
25									26		39	64
32									32.5		44	78
40	12	27	7.5	M6×1	17	10	6	3.3	38	7	45	79
50									46.5		49	81
63									56.5		54	85
80	16	28	7.5	M8×1.25	23	17	8	6.1	72	10	67	93
100									89		67	96