



SI50×150-CA



SI80×50-FA



SID80×50



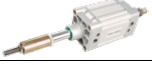








SI63×150

 Cylinder
 Sizing

 SI
 SI A.
 SIB
 SQ
 DNT
 SC / SU
 SCT
 SC A.
 SL
 DN
 DSN
 DN/DSN A.
 MA
 MAC
 MA/MAC A.
 MAL
 MALC
 MAL/MAC L A.
 SDA
 CQ2
 TCQ2
 ADN
 TADN
 PPRM
 CJ2
 CDU
 TN
 CXS
 MGP
 MSQ

Ordering Code

SI	D	50	50	10	S	LB	MT
Series	Series Code	Bore	Stroke	Adjustable Stroke	Magnet	Mountings	Sensor
SI: ISO 15552 Standard cylinder 	Blank: Standard double acting D: Double-shaft double acting  J: Double-shaft with adjustable stroke 	32 40 50 63 80 100 125		10: 10mm 20: 20mm 30: 30mm 50: 50mm 75: 75mm 100: 100mm	S: With magnet Blank: Without magnet	Blank: Basic mountings LB: Front and back mounting  FA: Front mounting flange FB: Back mounting flange  CA: Back clevis (Single earring)  CB: Back hinge (Double earring)  YB: Back hinge 	JEL-30R type  * Standard wire is 1 meter, please order for other length

*All SI series standard cylinder with magnet.

Specification

Bore (mm)	32	40	50	63	80	100	125
Operation	Double Acting						
Working Medium	Air						
Mountings	Basic FA FB CA CB LB YB						
Operating Pressure Range	1 ~ 9.0 Kg/cm ²						
Proof Pressure	13.5 Kg/cm ²						
Operating Temperature Range	-20 ~ 70°C						
Operating Speed Range	50 ~ 800mm/s						
Cushion	Adjustable Cushion						
Adjustable Cushion Stroke	20 mm			26 mm			
Port Size	G1/8"	G1/4"		G3/8"		G1/2"	

SI Series

Standard Cylinder

(Conforms to ISO15552 Standard)



JELPC®

JELPC

— China Pneumatic

Cylinder

Sizing

SI

SI A.

SIB

SQ

DNT

SC / SU

SCT

SC A.

SL

DN

DSN

DN/DSN A.

MA

MAC

MA/MAC A.

MAL

MALC

MAL/MALC A.

SDA

CQ2

TCQ2

ADN

TADN

PPRM

CJ2

CDU

TN

CXS

MGP

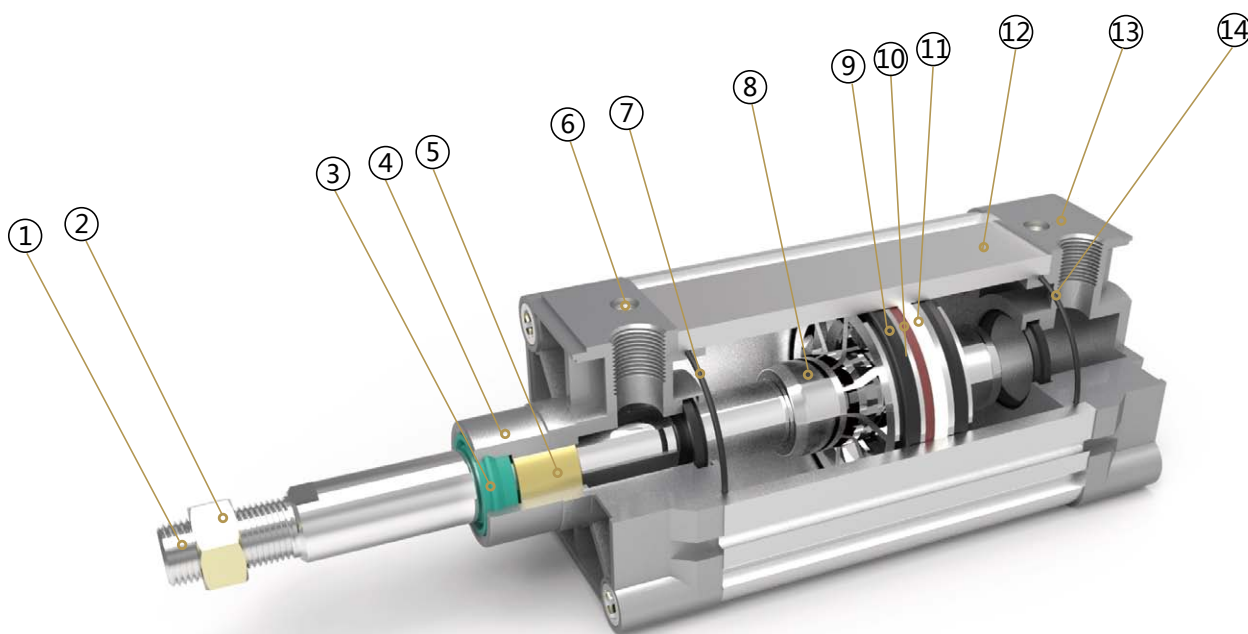
MSQ

Stroke

hidroticaret
uzman satış, doğru fiyat, hızlı teslimat

Bore	Standard Stroke																Max. Stroke	Allowable Stroke			
32	25	50	75	80	100	125	150	160	175	200	250	300	350	400	450	500	1000	2000			
40	25	50	75	80	100	125	150	160	175	200	250	300	350	400	450	500	600	700	800		
50	25	50	75	80	100	125	150	160	175	200	250	300	350	400	450	500	600	700	800	900	1000
63	25	50	75	80	100	125	150	160	175	200	250	300	350	400	450	500	600	700	800	900	1000
80	25	50	75	80	100	125	150	160	175	200	250	300	350	400	450	500	600	700	800	900	1000
100	25	50	75	80	100	125	150	160	175	200	250	300	350	400	450	500	600	700	800	900	1000
125	25	50	75	80	100	125	150	160	175	200	250	300	350	400	450	500	600	700	800	900	1000

Internal Structure

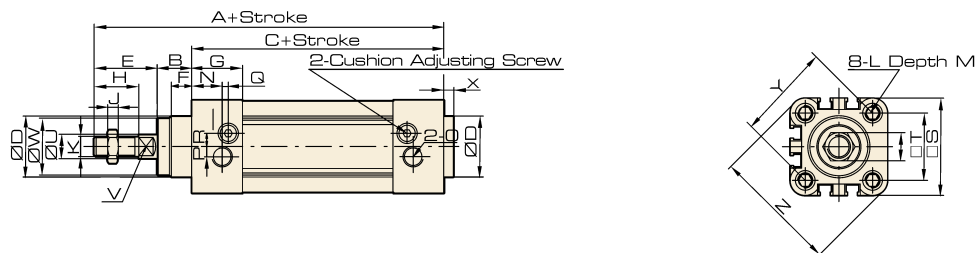


Parts

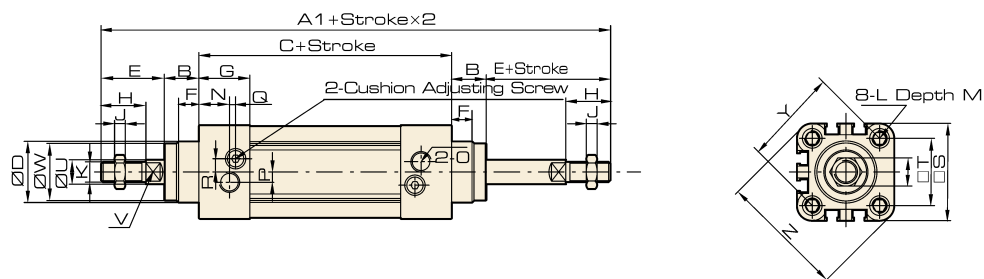
Number	Name	Number	Name
1	Piston rod	8	Piston
2	Hexagon nut	9	Y ring
3	Shaft seal	10	Magnet
4	Front cover	11	Anti-friction ring
5	Copper tube	12	Barrel
6	Cushion adjust screw	13	Back cover
7	Cushion seal	14	O ring

Overall Dimension

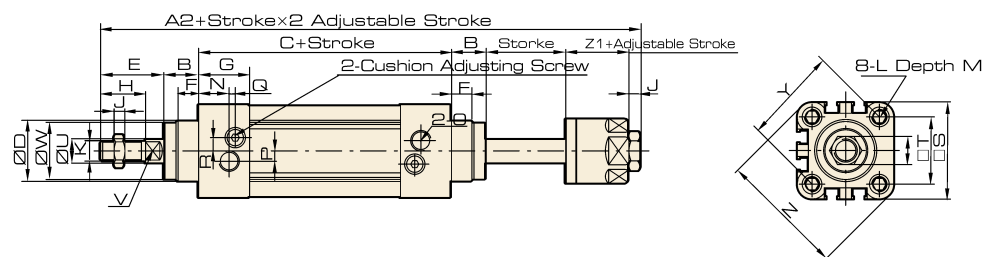
SI



SID



SJ



Cylinder
Sizing

SI

SI A.

SIB

SQ

DNT

SC / SU

SCT

SC A.

SL

DN

DSN

DN/DSN A.

MA

MAC

MA/MAC A.

MAL

MALC

MAL/MACI A.

SDA

CQ2

TCQ2

ADN

TADN

PPRM

CJ2

CDU

TN

CXS

MGP

MSQ

Dimension

Bore/ Symbol	A	A1	A2	B	C	D	E	F	G	H	I	J	K	L
32	142	190	185	16	94	30	33	10	25	22	17	6	M10x1.25	M6
40	159	213	207	20	105	35	34	10	29.5	24	17	7	M12x1.25	M6
50	175	244	233	27	106	40	42.5	10	32	32	23	8	M16x1.5	M8
63	190	258	247	26	122	45	42	10	36	32	23	8	M16x1.5	M8
80	214	301	288	35	126	45	53	10	37	40	26	10	M20x1.5	M10
100	229	321	308	40	137	55	52	10	39	40	26	10	M20x1.5	M10
125	277	394	378	46	160	60	71	10	43.5	54	40	10	M27x2	M12

Bore/ Symbol	M	N	O	P	Q	R	S	T	U	V	W	X	Y	Z	Z1
32	12	15	G1/8	5	3	6.5	45	32.5	12	10	28	4	46	58.7	21
40	12	17.5	G1/4	7	3	7	52	38	16	13	33	4	53.7	68	21
50	12	20	G1/4	7	3	9	65	46.5	20	17	38	4	65.8	84.5	23
63	12	22	G3/8	8	5	9	76	56.5	20	17	38	4	79.9	99.6	23
80	15	23	G3/8	10	5	12	94	72	25	22	43.5	5	101.8	123.8	29
100	15	26	G1/2	10	5	14	112	89	25	22	47	6	125.9	148.9	29
125	20	29	G1/2	10	5	14	134	110	32	27	53	7	156.9	179.6	40.5

SI Series

Standard Cylinder Accessory
(Conforms to ISO15552 Standard)



JELPC®

JELPC

— China Pneumatic

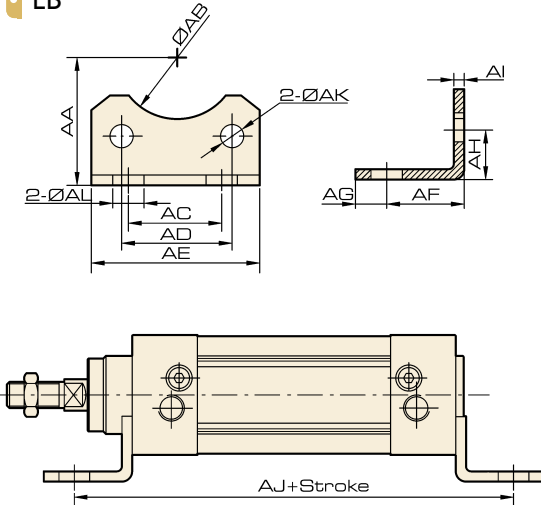
LB Foot



Overall Dimension

Dimension

LB

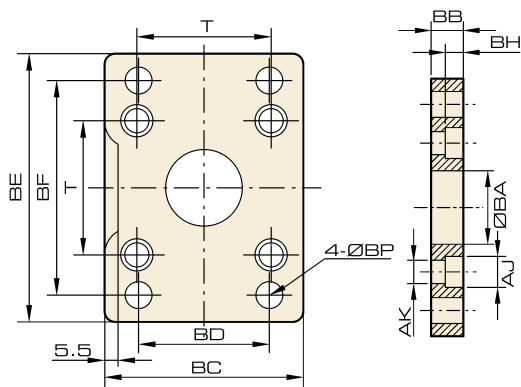


Bore/Symbol	32	40	50	63	80	100	125
AA	32	36	45	50	63	71	90
AB	30	35	40	45	45	55	60
AC	32	36	45	50	63	75	90
AD	32.5	38	46.5	56.5	72	89	110
AE	45	52	65	75	95	115	140
AF	24	28	32	32	41	41	45
AG	11	8	15	13	14	16	18
AH	15.8	17	21.8	21.8	27	26.5	35
AI	4	4	5	5	6	6	8
AJ	142	161	170	185	210	220	250
AK	7	7	9	9	11	11	12.5
AL	7	10	10	10	12	14.5	16.5

FA / FB Flange

Overall Dimension

FA, FB



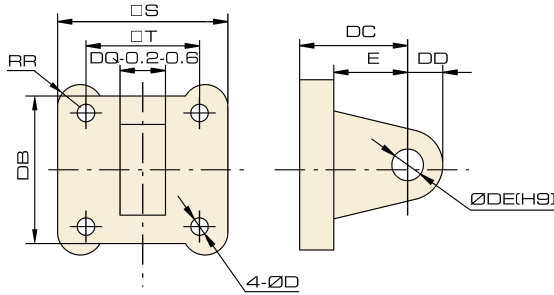
Bore/Symbol	32	40	50	63	80	100	125
BA	30.3	35.3	40.3	45.3	45.3	55.3	60.3
BB	10	10	12	12	16	16	20
BC	45	52	65	76	94	112	140
BD	32	36	45	50	63	75	90
BE	80	90	110	120	150	175	224
BF	64	72	90	100	126	150	180
BH	6.5	6.5	8.5	8.5	10.5	10.5	15
AJ	10.5	10.5	13.5	13.5	16.5	16.5	19
AK	6.5	6.5	8.5	8.5	10.5	10.5	12.5
BP	7	9	9	9	12	14	16
T	32.5	38	46.5	56.5	72	89	110

CA Hinge

Overall Dimension

Dimension

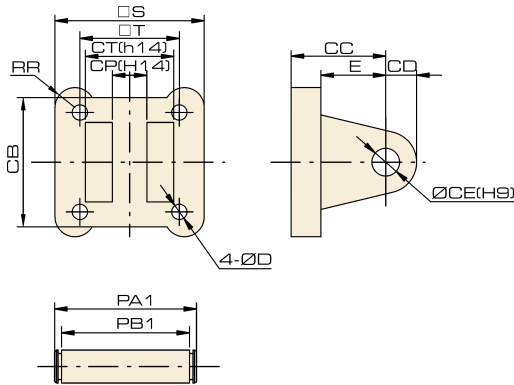
CA



Bore/Symbol	32	40	50	63	80	100	125
S	45	52	65	76	94	112	140
T	32.5	38	46.5	56.5	72	89	110
RR	6.5	6.5	9	9.5	11	11.5	12
DB	34	41	54	65	83	101	123
DC	22	25	27	32	36	41	50
DD	10	11	13	16	16	20	25
DE	10	12	12	16	16	20	25
DQ	26	28	32	40	50	60	70
D	6.5	6.5	8.5	8.5	10.5	10.5	12.5
E	14	17	17	22	24	25	30

CB Hinge

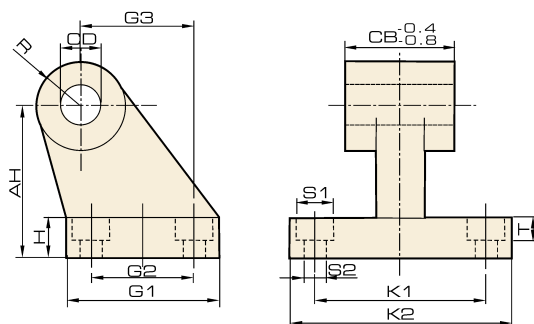
CB



Bore/Symbol	32	40	50	63	80	100	125
S	45	52	65	76	94	112	140
T	32.5	38	46.5	56.5	72	89	110
D	6.5	6.5	8.5	8.5	10.5	10.5	12.5
E	14	17	17	22	24	25	30
RR	6.5	6.5	9	9.5	11	11.5	12
CB	34	41	54	65	83	101	123
CC	22	25	27	32	36	41	50
CD	10	11	13	16	16	20	25
CE	10	12	12	16	16	20	25
CP	26	28	32	40	50	60	70
CT	45	52	60	70	90	110	120
PA1	53	60	68	78	100	120	130
PB1	46.5	53.5	61.5	71.5	91.5	111.5	121.5

YB Hinge

YB



Bore/Symbol	32	40	50	63	80	100	125
AH	32	36	45	50	63	71	90
H	8	10	12	12	14	15	20
CD	10	12	12	16	16	20	25
G1	31	35	45	50	60	70	90
G2	18	22	30	35	40	50	60
G3	21	24	33	37	47	55	70
CB	26	28	32	40	50	60	70
K1	38	41	50	52	66	76	94
K2	51	54	65	67	86	96	124
S1	11	11	14	14	17	17	20
S2	6.6	6.6	9	9	11	11	14
T	1.6	1.6	1.6	1.6	2.5	2.5	3.2
R	10	11	13	15	15	19	22.5

Cylinder
Sizing
SI

SI A.

SIB

SQ

DNT

SC / SU

SCT

SC A.

SL

DN

DSN

DN/DSN A.

MA

MAC

MA/MAC A.

MAL

MALC

MA/MALC A.

SDA

CQ2

TCQ2

ADN

TADN

PPRM

CJ2

CDU

TN

CXS

MGP

MSQ